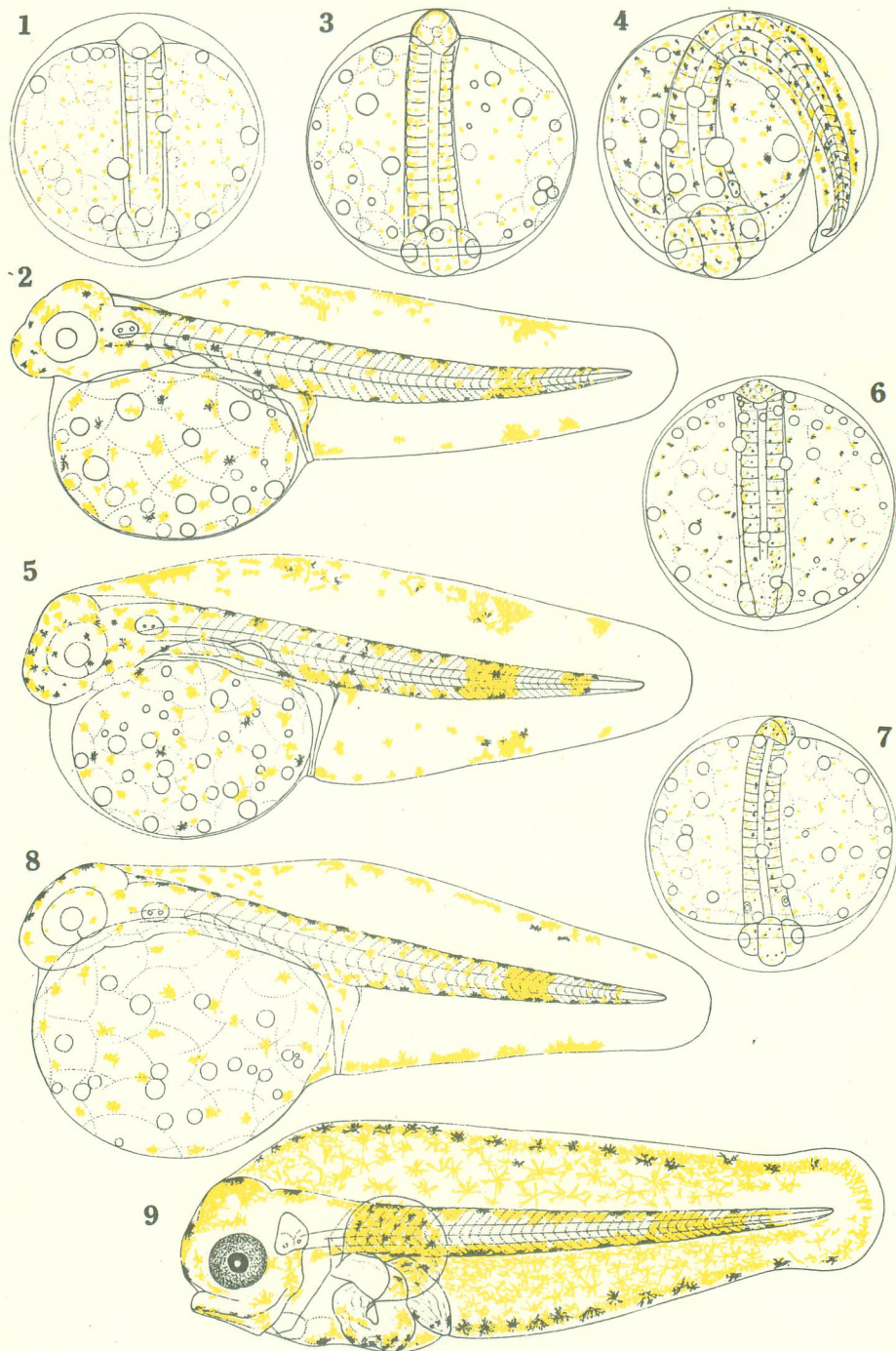
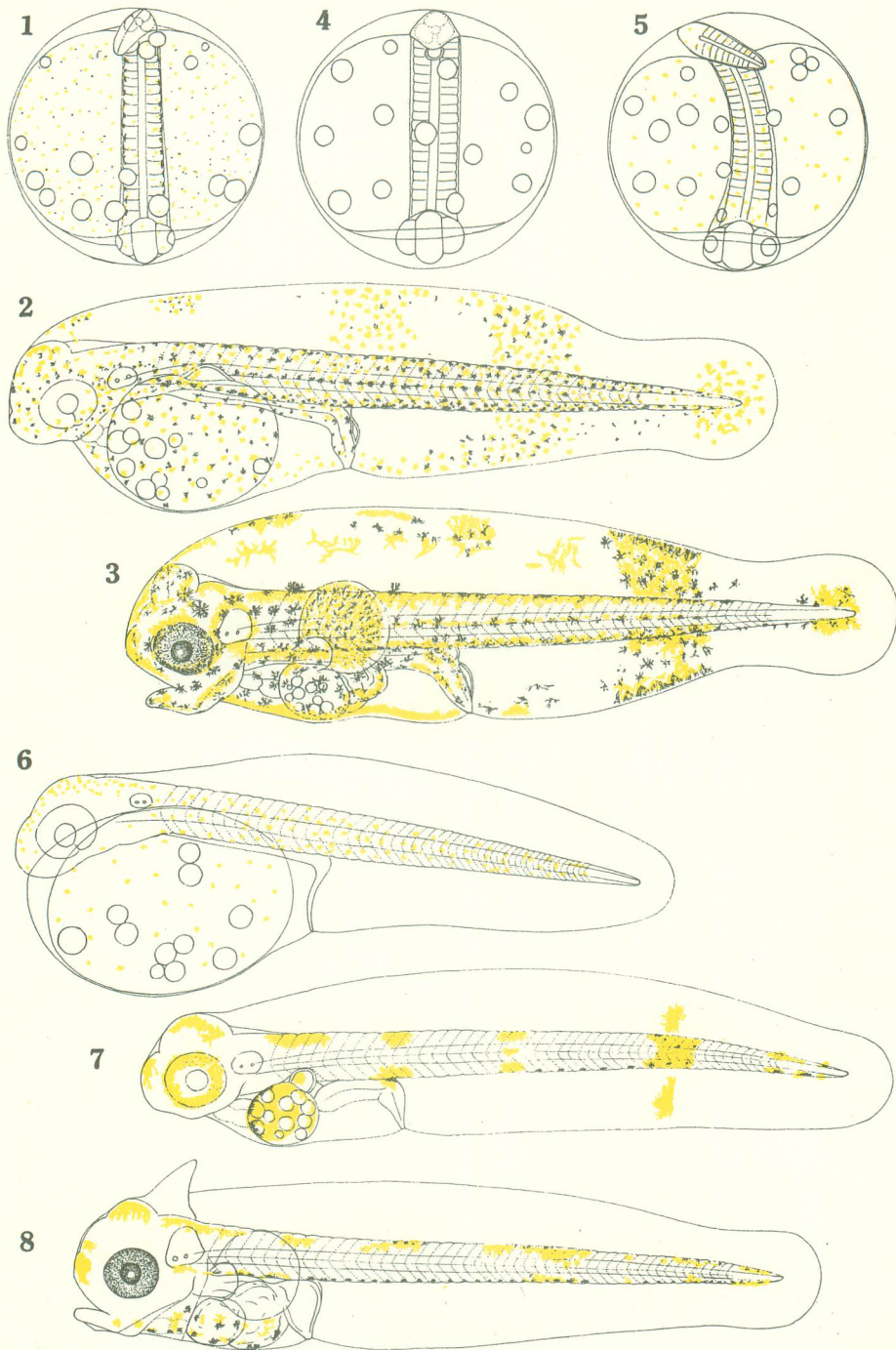


Synapturinae gen. sp., No. 2 セトウシノシタ *Zebrias japonicus* (BLEEKER)?

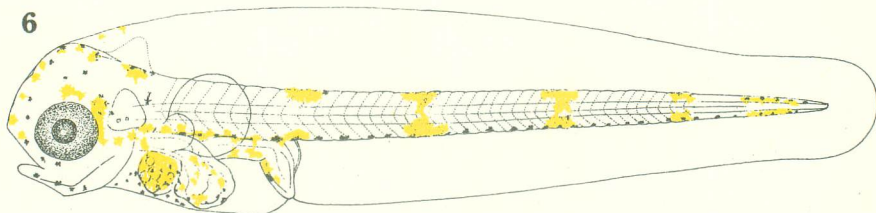
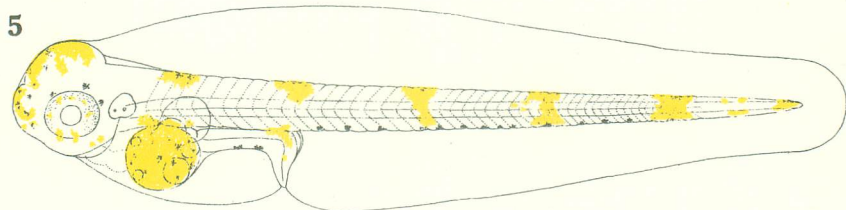
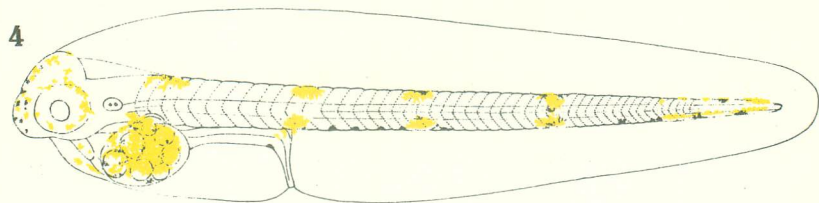
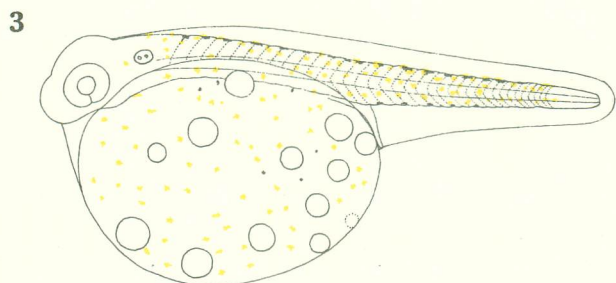
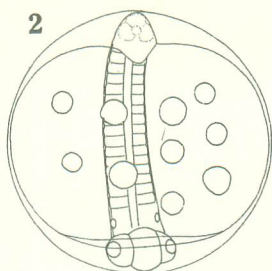
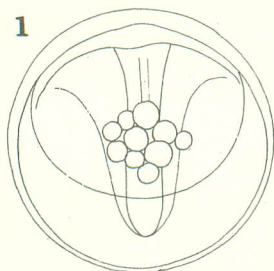
Synapturinae gen. sp., No. 3 シマウシノシタ *Zebrias zebra* (BLOCH et SCHNEIDER)?

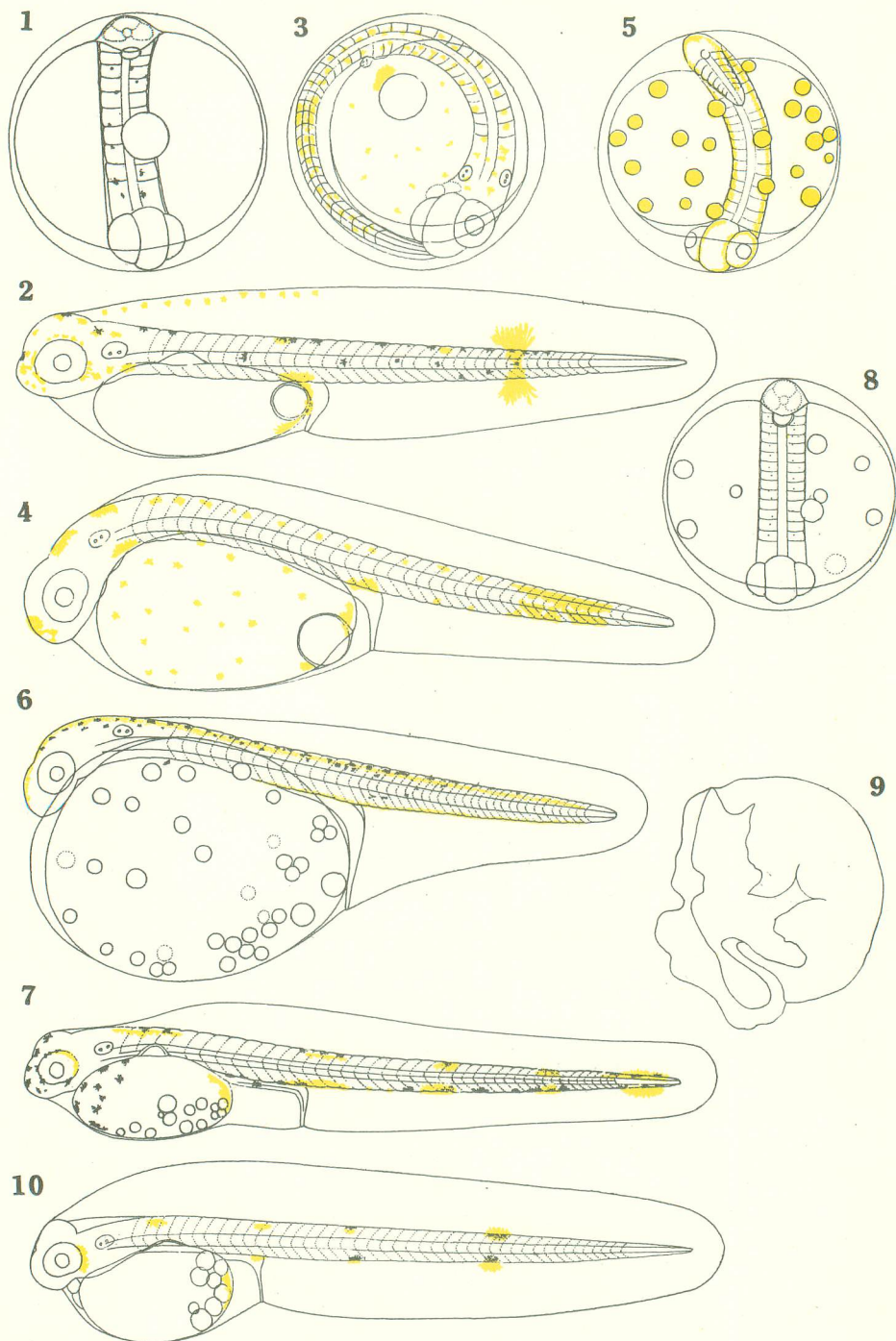


ウシノシタ型 *Cynoglossidae* *gen. sp.*, Nos. 1, 2, 3



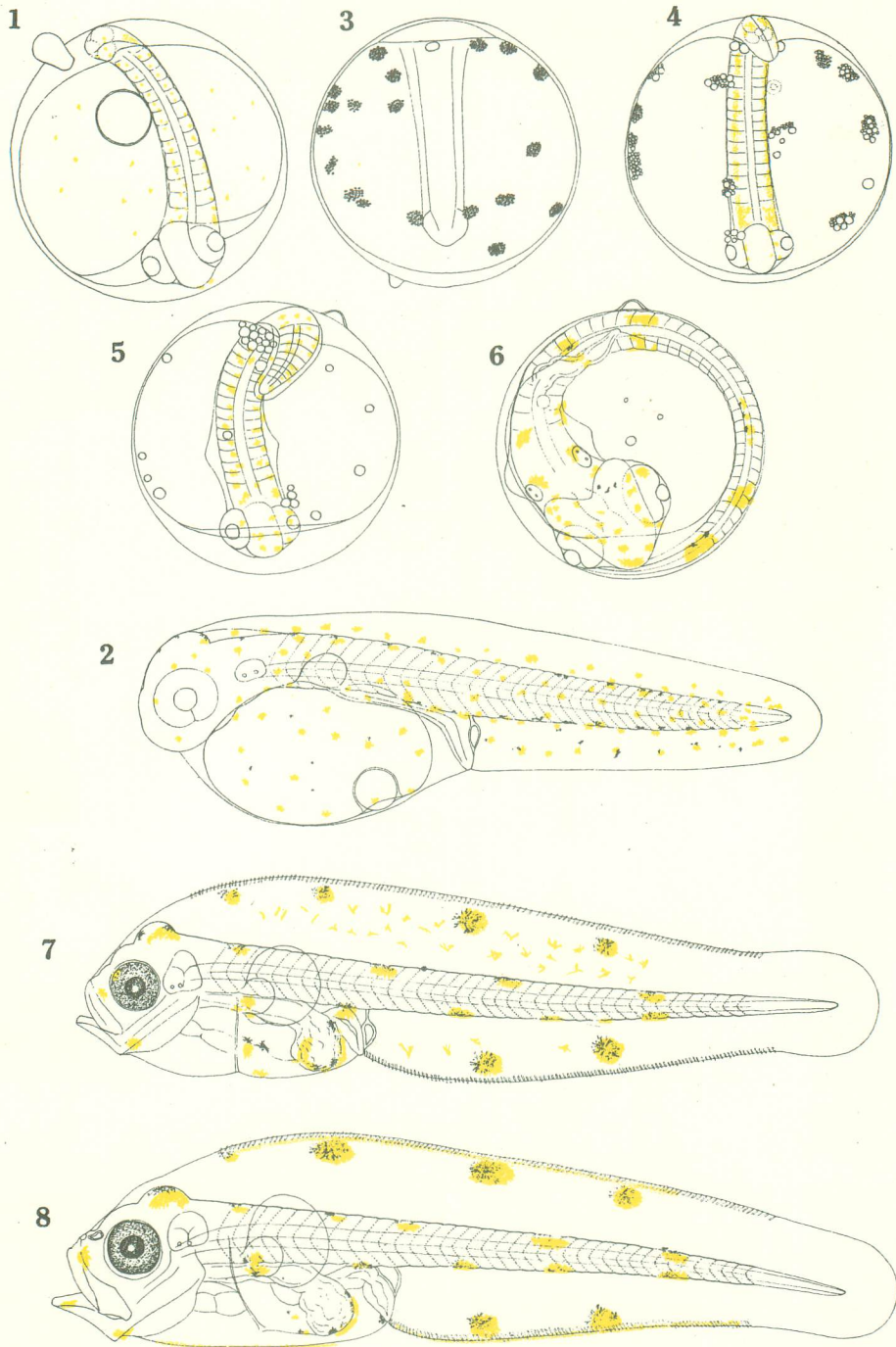
ウシノシタ型 Cynoglossidae *gen. sp.*, Nos. 4, 5





ヒラメ型 Bothidae *gen. sp.*, No. 6

ウシノシタ型 Cynoglossidae *gen. sp.*, Nos. 7, 8



ヒラメ型 *Bothidae gen. sp.*, No. 10

シマウシノシタ型 *Synapturinae gen. sp.*, No. 4